



Data Quality

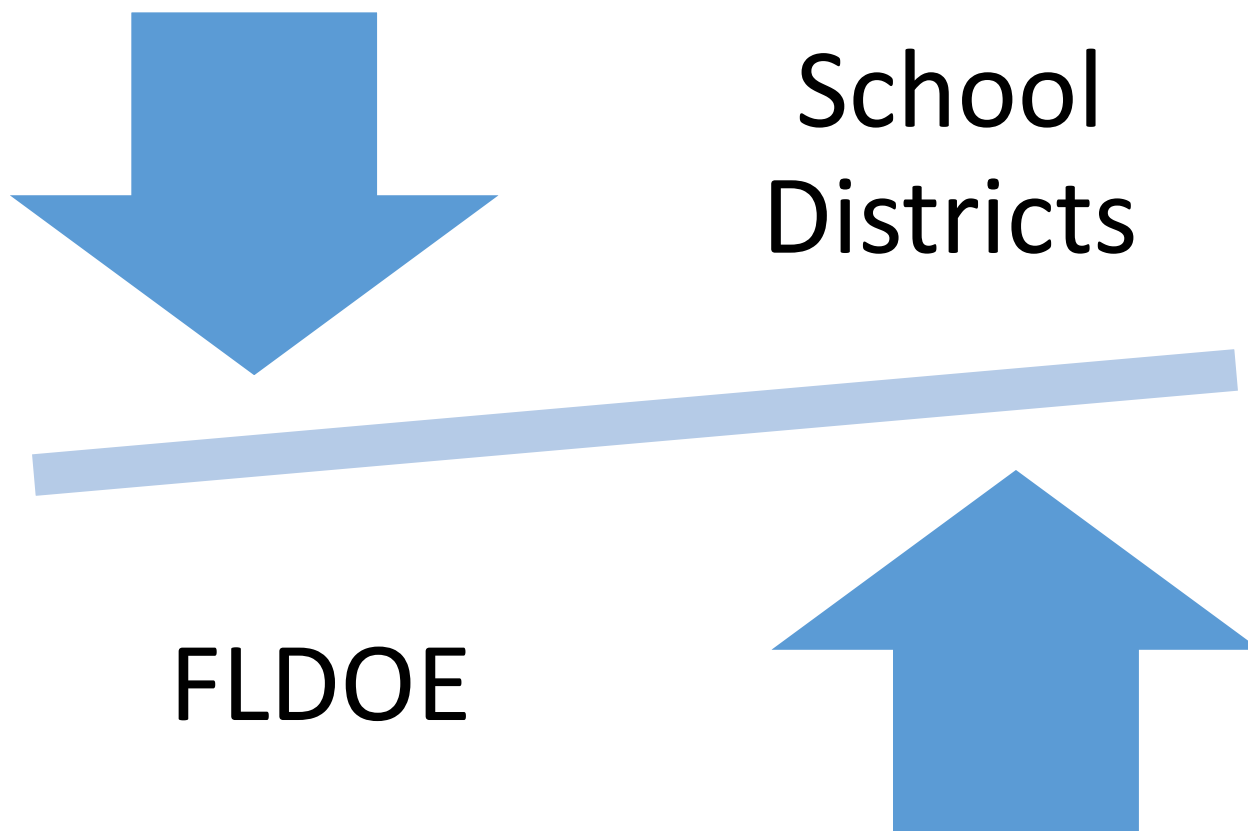
June 26, 2019



FLORIDA DEPARTMENT OF
EDUCATION
fldoe.org

www.FLDOE.org

Data Quality



Grand Jury Investigation

The Grand Jury may investigate crimes related, but not limited to:

- 1) Whether refusal or failure to follow the mandates of school-related safety laws, such as the Marjory Stoneman Douglas Public Safety Act, results in unnecessary and avoidable risk to students across the state;
- 2) Whether public entities committed—and continue to commit—fraud and deceit by accepting state funds conditioned on implementation of certain safety measures while knowingly failing to act;
- 3) Whether school officials committed—and continue to commit—fraud and deceit by mismanaging, failing to use, and diverting funds from multimillion-dollar bonds specifically solicited for school safety initiatives;
- 4) **Whether school officials violated—and continue to violate—state law by systemically underreporting incidents of criminal activity to the Department of Education;**

Underreport

verb

un·der·re·port | \ ,ən-dər-ri-'pört \

underreported; underreporting; underreports

Webster Definition of *underreport*

transitive verb

: to report to be less than is actually the case :

UNDERSTATE *underreports* his income

Lunch Status Reporting (#146025)

Year: **2019-20**

Data Element Number: **146025**

Data Element Name: **Lunch Status**

Lunch Status is defined as the student's eligibility status for participation in the National School Lunch Program. Eligibly status is based upon the type of National School Lunch Program Provision offered in the student's School Number, Current Enrollment.

Code	Definition/Example
------	--------------------

Community Eligibility Provision

- | | |
|---|--|
| C | The student is enrolled in a USDA – approved Community Eligibility Provision (CEP) school and is identified as eligible for free meals based upon the Direct Certification... (Only FL Department of Agriculture and Consumer Services (FDACS) - approved CEP schools use this code.) |
| N | The student is enrolled in a USDA – approved Community Eligibility Provision (CEP) school and is NOT identified as eligible for free or reduced priced meals based upon the Direct Certification (Only FDACS - approved CEP schools use this code.) |
| R | The student is enrolled in a USDA – approved Community Eligibility Provision (CEP) school and is identified as eligible for reduced price meals based upon the Direct Certification... (Only FL Department of Agriculture and Consumer Services (FDACS) - approved CEP schools use this code.) |

Eligibility Status Determined by Survey Application

- | | |
|---|--|
| 0 | The student did not apply for free or reduced price meals. |
| 1 | The student applied for free or reduced price meals but is not eligible. |
| 3 | The student is eligible for reduced-price meals. (Based on FRL eligibility survey only.) |
| D | The student is identified as eligible for free meals based upon the Direct Certification determination... |
| E | The student is identified as eligible for reduced price meals based upon the Direct Certification determination... |
| F | The student is eligible for free meals. (Based on FRL eligibility survey only.) |

Provision 2

- | | |
|---|--|
| 4 | The student is enrolled in a USDA-approved Provision 2 school. |
|---|--|

Z or Not Applicable

- | | |
|---|---|
| Z | Unknown. This code should be used only for private school students participating in Title I programs and (optionally) for reporting survey 6 information. |
|---|---|

Restraint and Seclusion Data

- On March 22, 2019, FLDOE received a letter from U.S. Department of Education Office for Civil Rights (OCR) regarding FDOE's 2015-16 Civil Rights Data Collection (CRDC) reporting on restraint and seclusion.
- June 18, 2019 - Jenny Abamu at the WLRN in Miami reported, "The GAO report calls for 'immediate action' from FDOE because more than 17,000 districts reported zero incidents of restraint and seclusion data in the 2015/16 and a follow up with districts reported zero in the 2017/18 school year."

MASTER SCHOOL IDENTIFICATION (MSID)

The Master School Identification file is maintained by the Florida Department of Education to ensure that the department provides accurate identification and directory information on each Florida public school in the state. This file contains information for all public PK-12 schools, as well as for adult and technical schools operated by district school boards.

Every Student Succeeds Act (ESSA)

- The Every Student Succeeds Act (also known as ESSA) is a bipartisan federal law that was signed in December 2015.
- It amended the Elementary and Secondary Education Act of 1965, replacing No Child Left Behind provisions.
- Each state had to submit a state plan detailing how it would comply with the new law.
- Requires State, District and School Report Cards that replace School Public Accountability Reports (SPARS)
- <https://edudata.fldoe.org/>

EduData Portal and Report Cards

EduData

Beta Test Site - [Provide Feedback](#) | [Subscribe for News and Updates](#)

Florida's Education Information Portal

The goal of Florida's EduData Portal is to increase the advancement of Florida students and schools by providing access to information that will facilitate important decisions about education in Florida. The links below provide access to **Florida report cards**, **advanced** and **standard reports** in a variety of formats including graphs, tables, maps, custom reports, and spreadsheets based on your interests in education-related data.

The Elementary and Secondary Education Act of 1965 as amended by the Every Student Succeeds Act (ESSA), requires every state and district to publish report cards that show how the state, district, and schools are doing with regard to student achievement and success. Secretary DeVos' [Parent Guide to State and Local Report Cards](#) is published as a resource to help parents and other stakeholders fully utilize the information provided in the report cards linked below. The [Florida Report Cards Quick Start User Guide](#) is designed to help parents and the public to navigate key components of Florida Report Cards.

Standard reports are grouped by subject below. These reports are the most frequently requested files/reports and can be downloaded in an Excel file.

Help us improve your experience by completing the [Florida Report Card Feedback Survey](#).

It is recommended that you download the latest version of a supported browser for the best report card experience. Fully supported browsers include Chrome, Firefox, and Internet Explorer.

Florida Report Cards & Advanced Reports



Florida Report Card
(Under Construction)



School Report Cards



District Report Cards



Advanced Reports

Standard Reports

[PK-12 Schools ▾](#)

[PK-12 Students ▾](#)

[PK-12 Staff ▾](#)

[District Career & Adult Education ▾](#)

[Florida College System ▾](#)

[Florida Education & Training Placement Information \(FETPIP\) ▾](#)

Links to
New Report
Cards and
EdStats

Links to
traditional
Excel files

District and School Report Cards

MSID Information

2017-18 School Report Card

Search by District:

Search by School:

Select a District

Select a School

View Report Card

YOUR HIGH SCHOOL

Title 1: ☒ Exceptional Student Education Center: ☐ Charter: ☐ Alternative Education: ☐

Grades Served:

9 10 11 12

District: Your District

Type: High School

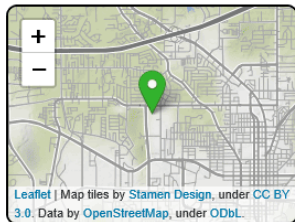
Principal: John Smith

Contact Info:

1000 ABC Circle

Your City, FL 32000-0000

(850) 111-1111



For information about Florida's Consolidated State Plan see [Every Student Succeeds Acts \(ESSA\)](#).

School Performance

School Grade

C

Graduation Rate:

84%

Identified for Support:

Yes

Details

View Components

For more information see the [School Grades Overview](#) and the [Guide to Calculating School and District Grades](#).

MSID information
Including Longitude and Latitude

Subgroup Information

Select Subgroup:

Total Students

Total Students

Race/Ethnicity

Students with Disabilities

English Language Learners

Economically Disadvantaged

Gender

Migrant

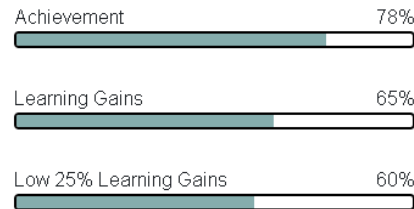
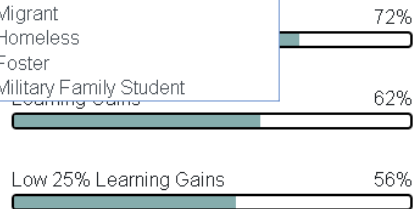
Homeless

Foster

Military Family Student

View Subgroup

Mathematics



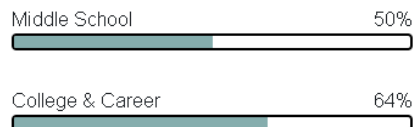
Social Studies



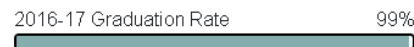
Science



Acceleration



Graduation Rate



Data Sources:

- Surveys 2, 3, 5
- Accountability files
- **Department of Children and Families (Foster Data)**

Additional Report Card Sections

[Population and Enrollment](#)

Assessments - Academic Achievement, Growth, and Participation

Assessments - English Language Learners

Acceleration Success

Discipline and Attendance

Graduation and Beyond

Educator Qualifications and Equity

Long-Term Goals and Interim Progress

Accelerated Course Enrollment

Preschool Enrollment

Per-Pupil Expenditures

National Data

Sections and Content

Missing Data Example

Educator Qualifications and Equity

Educator Experience
(Survey 2)

Out-of-Field
(Survey 2)

Educator Effectiveness
(Survey 5)

Educator Experience

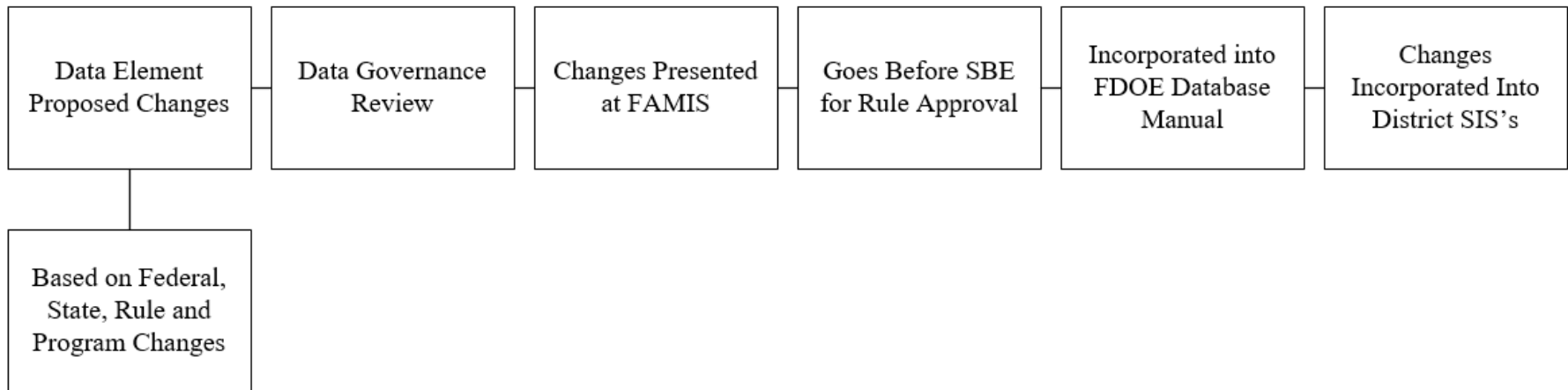
Educator Type	Inexperienced Educator Count	Experienced Educator Count	Experience Not Reported Count	Total Educator Count	Inexperienced Educator Percent
Teachers	1,030	1,584	99	2,713	38%
Principals	5	18	35	58	8.6%
Other	4	4	48	59	6.8%

Data Not Reported

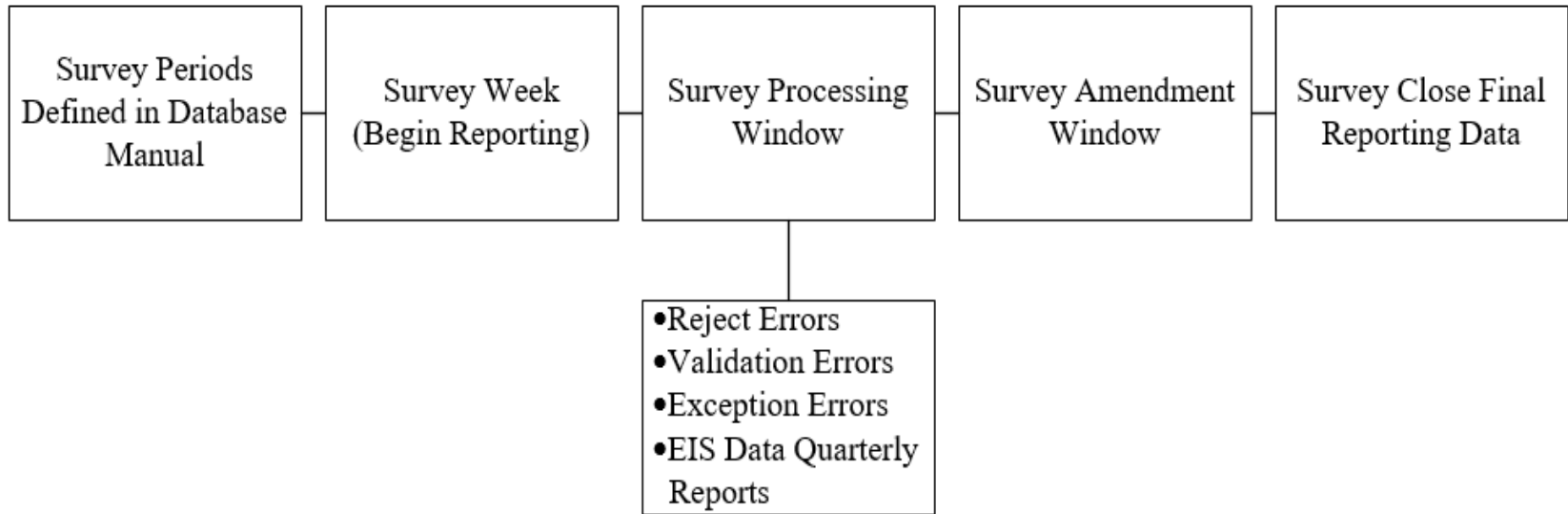
Educator Effectiveness

Educator Type	Ineffective Educator Count	Effective Educator Count	No Evaluation Reported Count	Total Educator Count	Ineffective Educator Percent
Teachers	27	2,420	266	2,713	1%
Principals	0	51	7	58	0%
Other	0	53	6	59	0%

Validation of Data Process



Validation of Data Process



SB-7030 - School Safety Bill

The district school board will withhold payment of the superintendent's salary for non-compliance.





www.FLDOE.org



www.FLDOE.org